

AMN Options

*MapBook is a user-friendly, mass-deployment application with map-enabled functionality that provides the public safety staff the information where they need it in it, when they need it
In the field!*

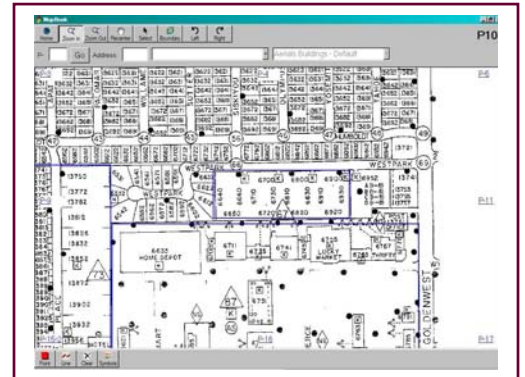
MapBook



X Y • M A P S

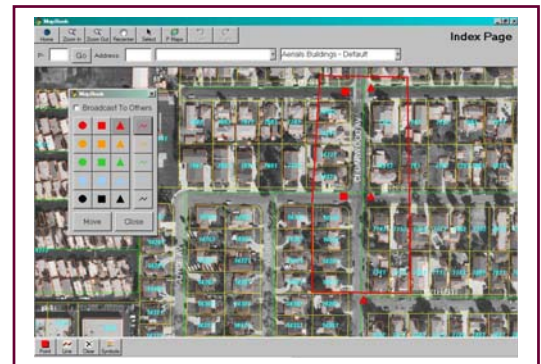
FOR THE GENERAL USER

- ✎ Integrates the paper map books previously used, now as scanned images, with the tools, data and the power of a GIS in the vehicle
- ✎ Provides familiar information with easier access and minimum effort
- ✎ Multiple scanned images can be linked to each other for more information on an incident location
- ✎ Designed to work on touch screens or laptops directly
- ✎ MapBook toggles between map images and GIS
- ✎ Intelligent speller to minimize time and error
- ✎ The GIS functionality includes:
 - ✎ Zoom In/Out & Pan
 - ✎ I-tool for information of incident location
 - ✎ Preconfigured map layers for ease of access
 - ✎ Search for address/intersection
 - ✎ Symbol/line drawing for perimeter planning



ADMINISTRATIVE TOOLS FOR IT STAFF TO:

- ✓ Import and configure more map layers
- ✓ Configure map colors and symbols
- ✓ Auto install program
- ✓ Link to most industry-standard databases and



MapBook provides the functionality of a high end system through a user-friendly interface in the vehicle.

